

Monthly Children's Hospital Helicopter Activity Summary

February 2021



22

Patient Transport Flights



1

Flight Used the Northern Flight Path

6

Emergent Overnight Patient Transport Flights



57

Flights to and from Lakefront Airport



Patients were flown to Children's Hospital for...

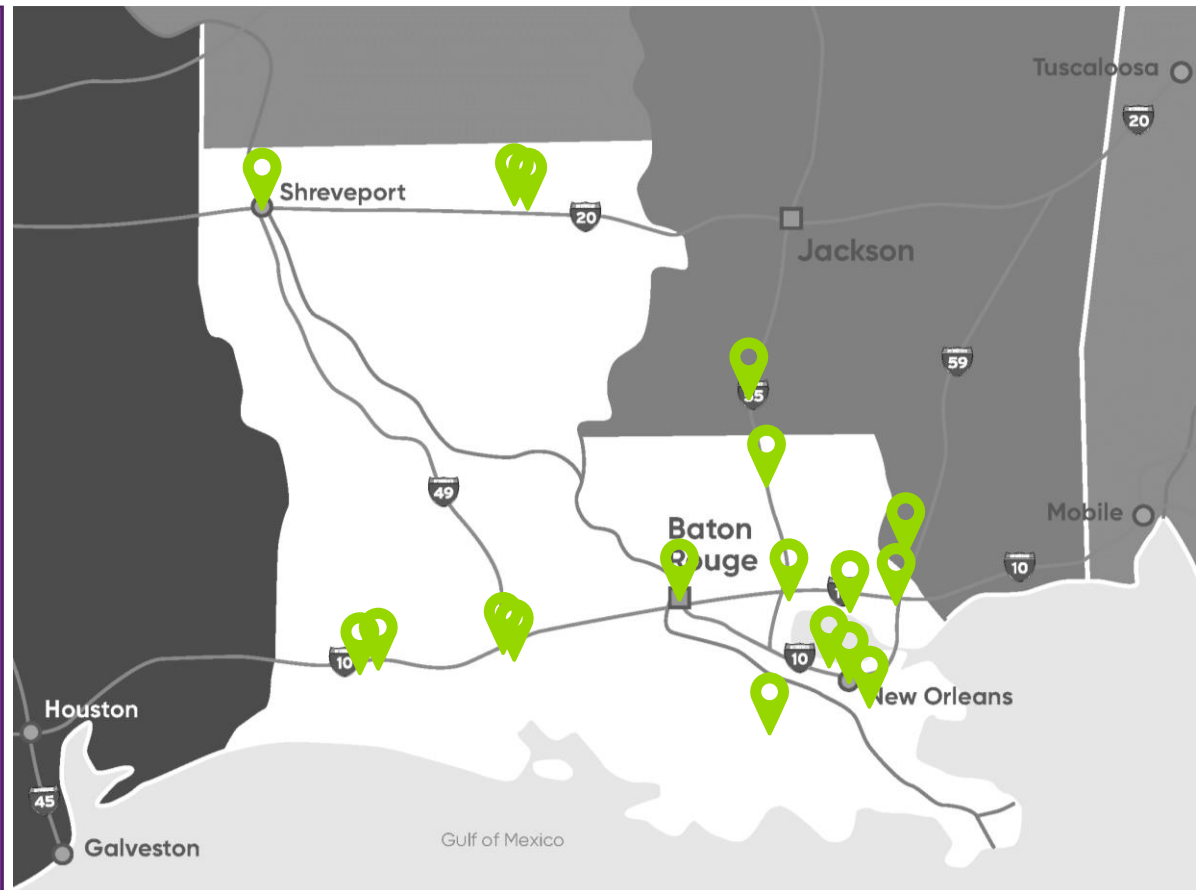
- 8 **Pediatric Critical Care Patients**
Example: stroke, brain bleed, brain tumor
- 4 **Neonatal Intensive Care Patients**
Example: premature baby, respiratory distress
- 8 **Cardiac Critical Care Patients**
Example: newborn with congenital heart defects
- 1 **Trauma Patients**
Example: motor vehicle accident
- 1 **Other**
Example: skull fracture



Children's Hospital
New Orleans
LCMC Health

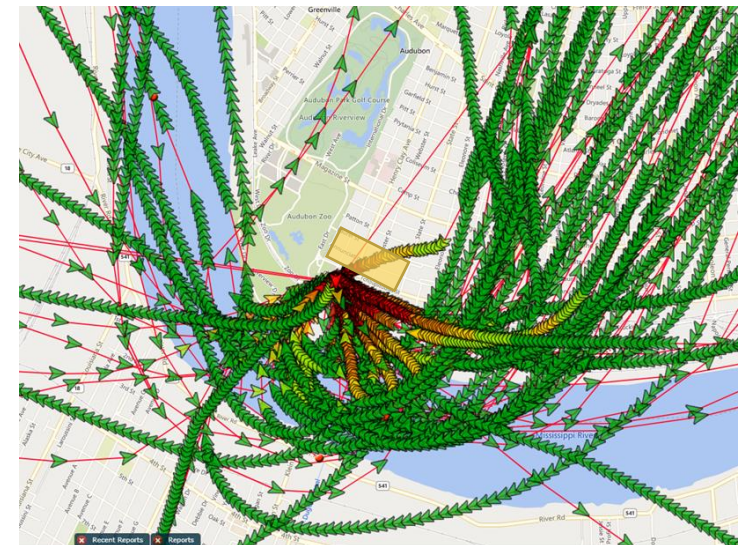
Referring facilities:

- Christus Ochsner Lake Area Hospital
- East Jefferson General Hospital
- Glenwood Regional Medical Center
- Highland Community Hospital
- Hood Memorial Hospital
- Lake Charles Memorial Hospital
- Lakeview Regional Medical Center
- North Oaks Medical Center
- Ochsner Lafayette General Medical Center
- Our Lady of Lourdes Women's & Children's Hospital
- Our Lady of the Lake Children's Hospital
- Slidell Memorial Hospital
- Southwest Mississippi Regional Medical Center
- St. Francis Medical Center
- Thibodaux Regional Medical Center
- Touro Infirmary
- University Medical Center
- West Jefferson Medical Center
- Willis-Knighton Medical Center



February 2021 Flight Path Data

- One flight had to use the Northern flight path due to unfavorable wind conditions.



The yellow box indicates the neighborhood zone for flight avoidance whenever possible, as previously communicated.