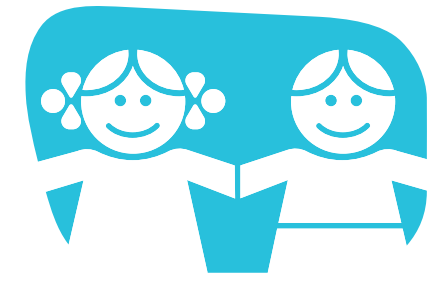


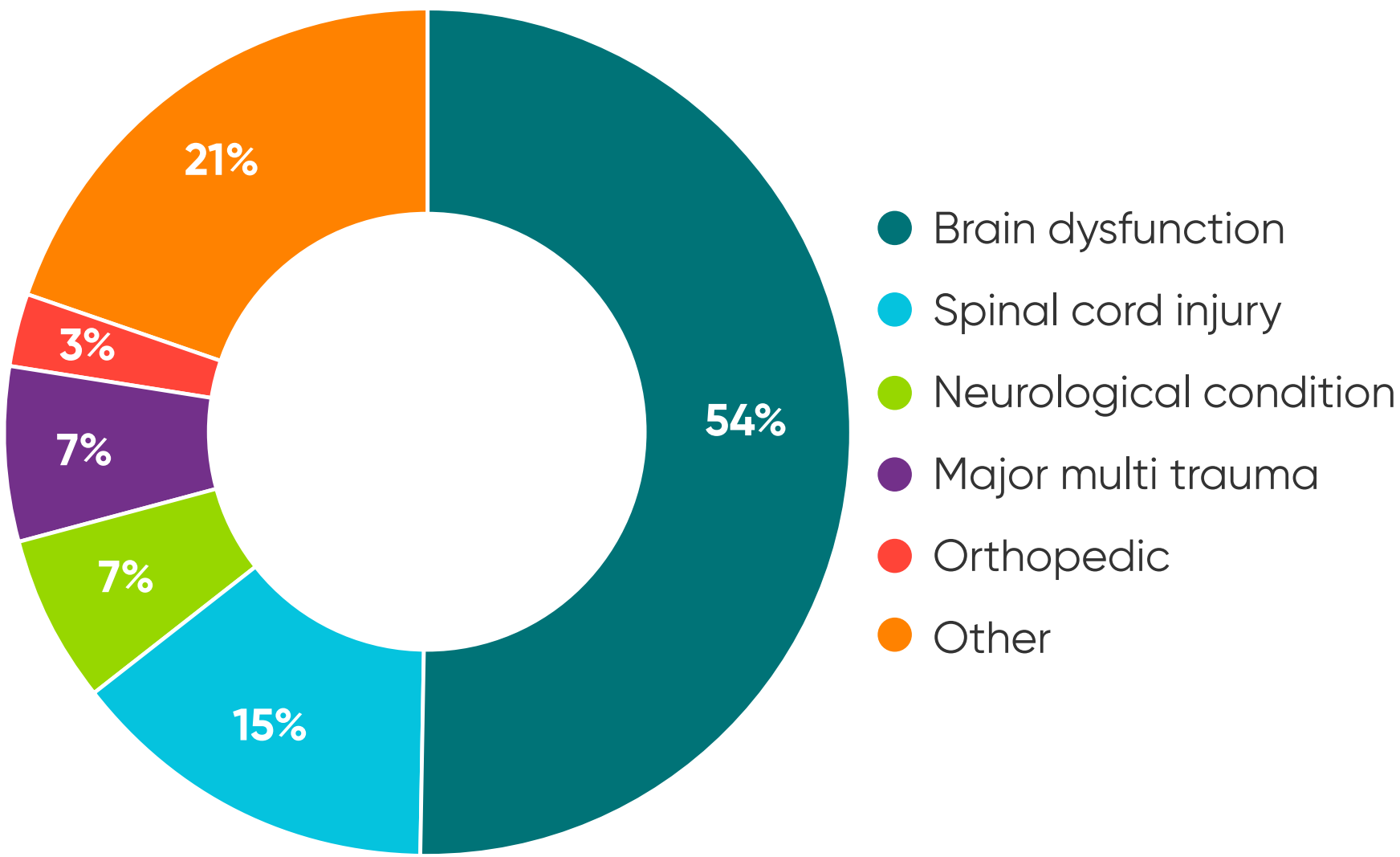
2025

Inpatient Rehabilitation Outcomes



Manning Family Children's
LCMC Health

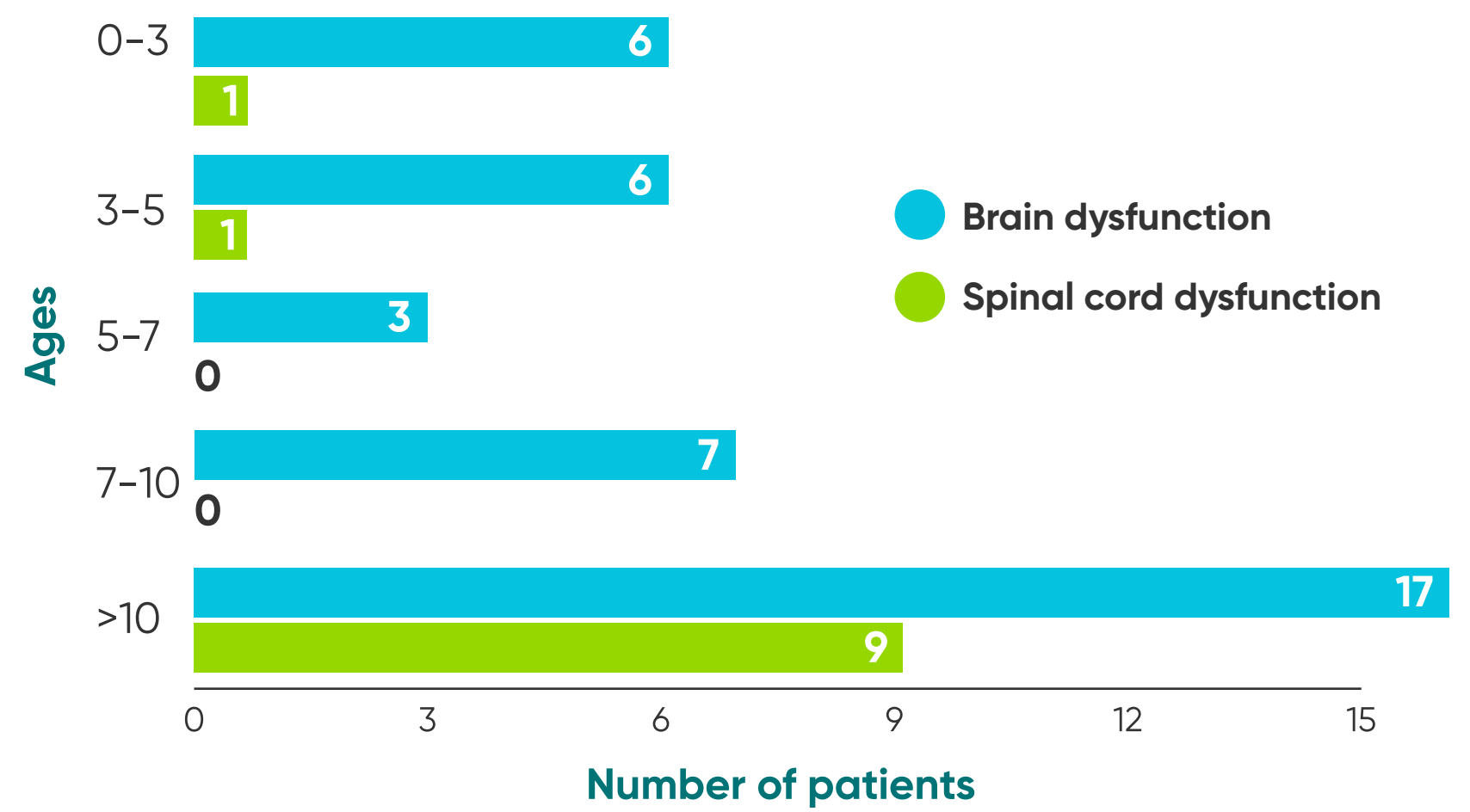
Rehabilitation admissions per diagnosis



MOST COMMON DIAGNOSIS

Brain injury

Admissions: number of patients by diagnosis and age



WeeFIM is an instrument that measures the severity of disability. It rates functional abilities and the "need for assistance."

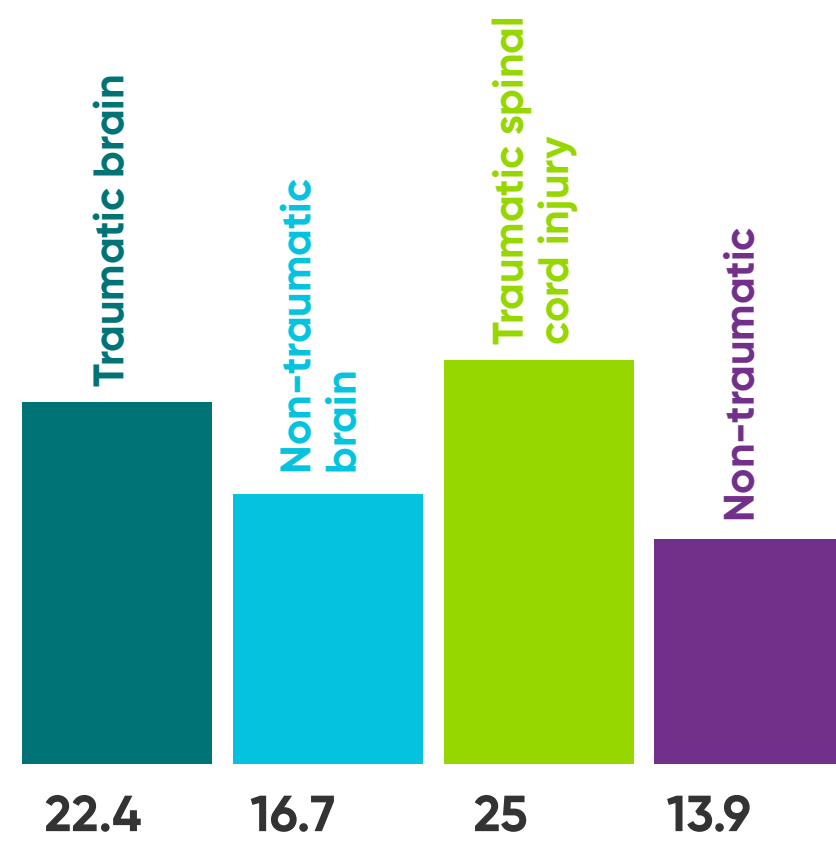
TOTAL ADMITS

72



AVERAGE WEEFIM RATING GAIN

21.6



OUR PROGRAM INCLUDES **Physical, Occupational, Speech, Music, Recreation Therapies, Child Life, Social Work, Case Management, Psychology, and Neuropsychology**

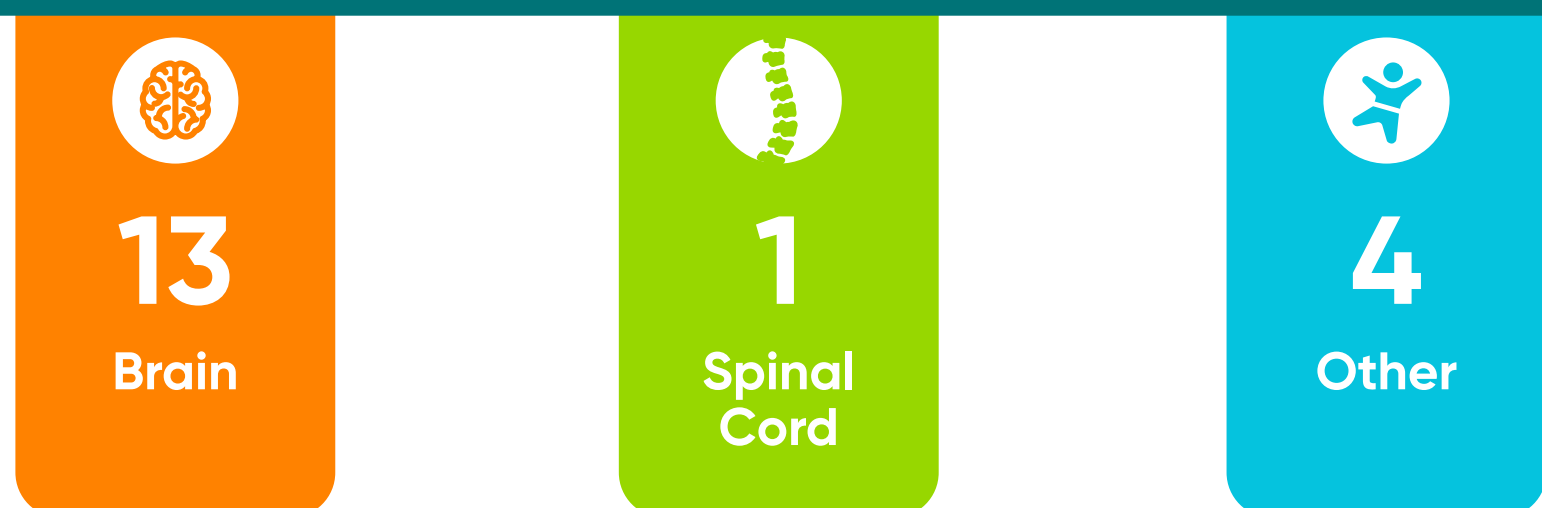
Patient satisfaction



NRC AVERAGE

83.7%

UNPLANNED TRANSFERS/PROGRAM INTERRUPTIONS



Average length of stay

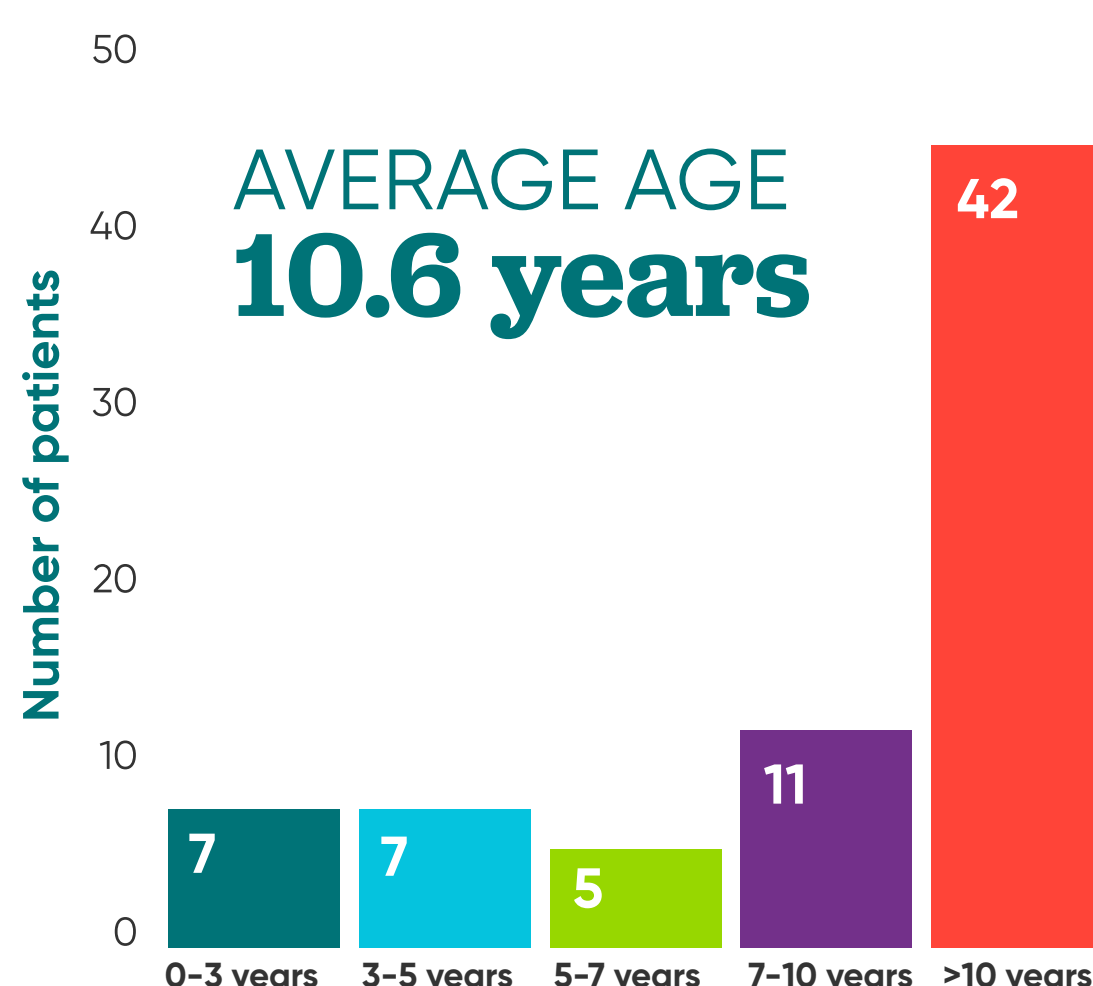


Traumatic brain dysfunction: **28.4 days**
 Non-traumatic brain dysfunction: **28.7 days**
 Traumatic spinal cord dysfunction: **33.8 days**
 Non-traumatic spinal cord dysfunction: **36.8 days**

OVERALL: 29.1 days



Discharges: number of patients by age



Discharged to community



Brain dysfunction
76.9%



Spinal cord dysfunction
100%